

## Program Cost

### 3-day program-\$275 (Early Bird \$250)

Includes: Continental breakfast on first day, all lunches, a briefcase of valuable resources, hands-on activities, job shadowing experiences, PSNA contact hours, and CHES credits.

### 2-day program-\$150 (Early Bird \$125)

(Past Participants Only)

Includes: lunch both days, job shadowing experiences, PSNA contact hours, and CHES/MCHES credits.

**Limited Scholarships Available  
to cover full/partial cost of Registration!  
Contact us to request a scholarship application**

## What others have said about our TEACH Academy

“There are so many opportunities in health care-something for everyone. Thank you so much for offering the Academy. I had a spectacular experience-learned so much!”

“Great experience all around!”

“The Reading Hospital is an awesome place to work. Workers have team player models in their Departments.”

“Excellent program - valuable information from all speakers; interactive; great hands-on activities.”

“I was extremely impressed with the amount of materials given and presented to us. The workbooks will be a very valuable tool in the future for myself and my students.”

“Great information, good contact for educators. Just a fantastic way for educators to get out and be hands-on with these careers.”

“The shadowing experience was invaluable, with insights that cannot be obtained by an explanation.”

“This was one of the best workshops I have attended over the past 23 years - well thought out, well organized, well orchestrated.”

For additional information, please contact:

Elizabeth Schaffer

eschaffer@ecneahec.org or (610) 379-2001

*Special rate of \$80 per night is available at the Holiday Inn Express (for those staying over). Just mention the TEACH Academy when calling to make reservations.*

## TEACH Academy

Wednesday-Friday, July 25-27, 2018

Holiday Inn Express, Reading

8:00 am - 5:00 pm

**New!** **Schedule / Activities \***

Day 1 \_\_\_\_\_

### Presentations:

- ◆ Journey through Health Careers \*
- ◆ Financial Aid

### Breakout Session:

- ◆ “Charging Your Sparkplugs”- Hands-on activity and dialogue with a Holistic Professional \*
- ◆ “The Circle of Life”- Hands-on activity and dialogue with professionals from the field of Mortuary Science
- ◆ Tour of the Reading Hospital School of Health Sciences

Day 2 \_\_\_\_\_

### Presentations:

- ◆ Trends in Health Care
- ◆ Code Blue: Health Care Professional Shortage Areas

### Lunch & Learn: Snapshot into Mental Health \*

- ◆ Job Shadowing Experiences

Day 3 \_\_\_\_\_

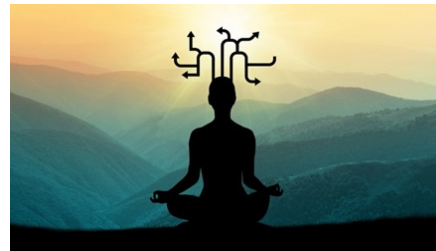
### ◆ Job Shadowing Experiences

Participate in 5 different Job Shadowing experiences at the Reading Health System. Participants will have the opportunity to network and share their experiences.

**Lunch & Learn: Preparing to Become a Doctor- My Journey to becoming a Family Practice Physician**

### Presentation:

- ◆ AHEC—Who? \*



## TEACH Academy Registration Form

I am registering for:

\_\_\_ 3-Day Program July 25 - 27, 2018

\_\_\_ \*2-Day Program July 26 - 27, 2018

*\*Past Participants Only*

*Registration and \$25 non-refundable deposit due by  
June 30, 2018*

To receive early bird rate, registration and \$25 non-refundable deposit must be received by June 1, 2018.  
Balance of fee will be due on or before first day of the TEACH Academy.

Last Name \_\_\_\_\_

First Name \_\_\_\_\_

Title \_\_\_\_\_

School Name \_\_\_\_\_

School Address \_\_\_\_\_

City \_\_\_\_\_

State \_\_\_\_\_ Zip \_\_\_\_\_

Business Phone \_\_\_\_\_

E-mail \_\_\_\_\_

Home Address \_\_\_\_\_

City \_\_\_\_\_

State \_\_\_\_\_ Zip \_\_\_\_\_

Home Phone \_\_\_\_\_

Make Check or Money Order Payable to:

**Eastcentral PA AHEC**

Mail to:

**Eastcentral PA AHEC  
5662 Interchange Road  
Lehigh, PA 18235**

Do you know that there are over 2,500 different careers in the field of Health Care?

Do you know that Health Career preparation ranges from on-the-job training to Medical School and everything in between?

Through didactic sessions, participants will hear about thousands of opportunities available to students in the field of health care, trends in health care and provider shortages, and how to relate them to health careers.

Participate in interactive hands-on activities with health care professionals.

Spend two days at the Reading Hospital where you will job-shadow a variety of health care professionals and be able to speak with them about experiences in their fields.

We welcome those who participated in the TEACH Academy in previous years to participate in the 2 days of Job Shadowing only.

### POTENTIAL CONTINUING EDUCATION CREDITS

Conference participants are qualified to receive the following upon completion of the 3-day program (Credits will be adjusted for 2-day participants):

#### ACT 48 Hours:

We are no longer able to provide Act 48 hours, but can assist with receiving the credits through your school district.

#### 16.75 PSNA Contact Hours:

Application for contact hours has been submitted. Reading Hospital is an approved provider of continuing nursing education by the Pennsylvania State Nurses Association, an accredited approver by the American Nurses Credentialing Centers Commission on Accreditation.

#### 18 Certified Health Education Specialist (CHES):

Application for Category 1 Continuing Education Contact Hours has been submitted to the National Commission of Health Education Credentialing.

Eastcentral PA AHEC  
5662 Interchange Road  
Lehighton, PA 18235

stamp

Join Us For  
**TEACH**  
Academy 2018



Funding for the Pennsylvania Area Health Education Center Program is provided by the United States Department of Health and Human Services, Health Resources and Services Administration and the Pennsylvania Department of Health. The Commonwealth's Medical Community and Communities at Large provide additional support.



The Eastcentral, Northeast  
and Southcentral  
PA Area Health Education Centers

## Present **TEACH Academy 2018**

Teachers Exploring and  
Advocating Careers in Health



**TEACH Academy East  
July 25-27, 2018**

*A Unique Opportunity for  
Teachers, School/Career Counselors,  
School Nurses or Educators  
who work with students  
Kindergarten through College*

**Holiday Inn Express**  
405 North Park Road  
Wyomissing, PA 19610  
(610) 373-4444

&  
**Reading Hospital**  
Reading, PA

